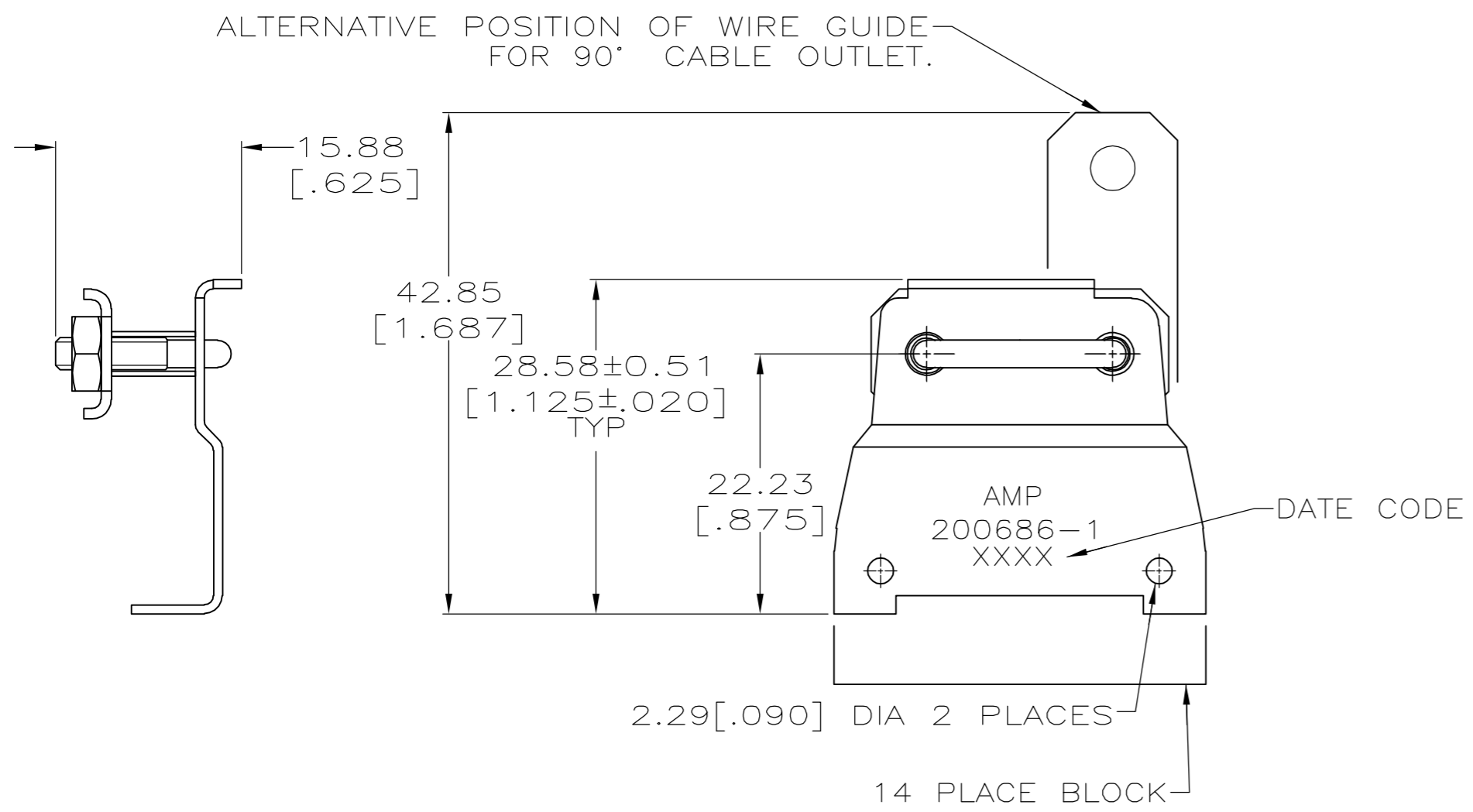
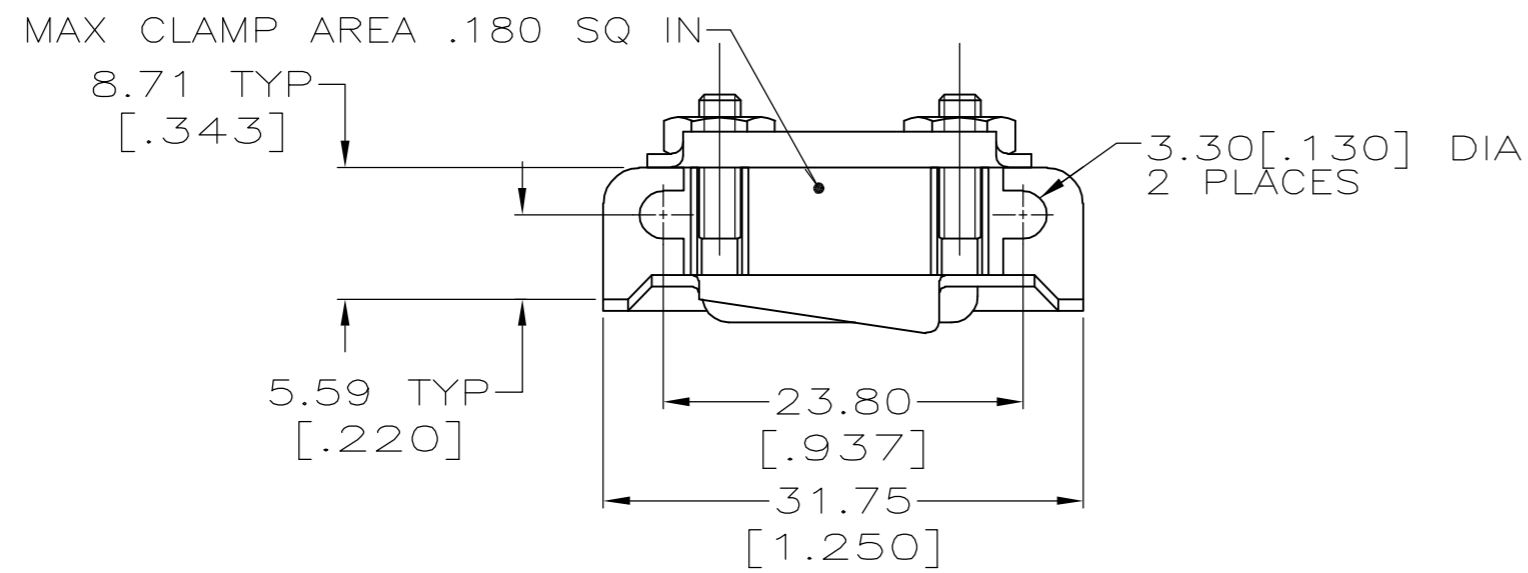
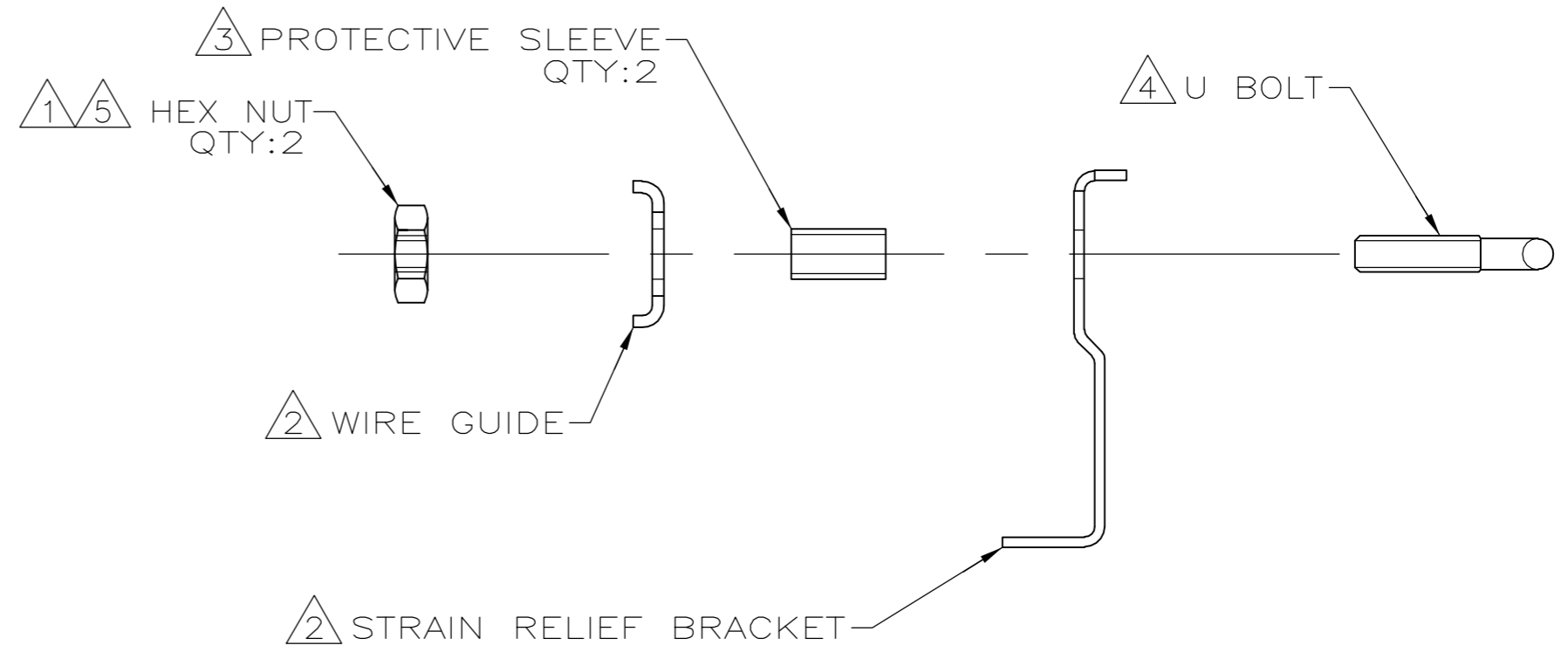


THIS DRAWING IS UNPUBLISHED. RELEASED FOR PUBLICATION  
 © COPYRIGHT BY TYCO ELECTRONICS CORPORATION. ALL RIGHTS RESERVED.

| LOC |     | DIST        |                         | REVISIONS |      |    |  |
|-----|-----|-------------|-------------------------|-----------|------|----|--|
| P   | LTR | DESCRIPTION | DATE                    | DWN       | APVD |    |  |
|     |     | L1          | REVISED PER ECO-05-4934 | 4/20/05   | SS   | GS |  |



- ① MATERIAL: CARBON STEEL. FINISH: ZINC PLATED WITH HEXAVALENT CHROMIUM.
- ② MATERIAL: CARBON STEEL. FINISH: 5.08um[.000200] MIN THICK NICKEL.
- ③ MATERIAL: FLEXIBLE PVC.
- ④ MATERIAL: STAINLESS STEEL. FINISH: PASSIVATED.
- ⑤ MATERIAL: CARBON STEEL. FINISH: ZINC PLATED WITH NON-HEXAVALENT CHROMIUM.

|                         |             |
|-------------------------|-------------|
| ⑤                       | 200686-4    |
| ①                       | 200686-1    |
| NUT MATERIAL AND FINISH | PART NUMBER |

|  |                     |                             |  |                 |
|--|---------------------|-----------------------------|--|-----------------|
| THIS DRAWING IS A CONTROLLED DOCUMENT. |                     | DWN C.REIFSNYDER 17 MAY 95  | Tyco Electronics Corporation   |                 |
| DIMENSIONS: mm                         |                     | CHK R.STONE 30 MAY 95       | Harrisburg, Pa 17105-3608  |                 |
| TOLERANCES UNLESS OTHERWISE SPECIFIED: |                     | APVD G.STEINHAUER 05 OCT 95 | NAME   |                 |
| 0 PLC ± -                              | 1 PLC ± -           | PRODUCT SPEC                | CLAMP KIT, UNASSEMBLED, STRAIN RELIEF, 14 PLACE, RECTANGULAR, M SERIES |                 |
| 2 PLC ± 0.38[.015]                     | 3 PLC ± -           | APPLICATION SPEC            | SIZE A2  | CAGE CODE 00779 |
| 4 PLC ± -                              | ANGLES ±' -         | WEIGHT -                    | DRAWING NO C=200686  | RESTRICTED TO - |
| MATERIAL SEE CALLOUTS                  | FINISH SEE CALLOUTS | CUSTOMER DRAWING            | SCALE 2:1  | SHEET 1 OF 1    |
|  |                     |                             | REV L1   |                 |

ASSEMBLED VIEW

200686

A